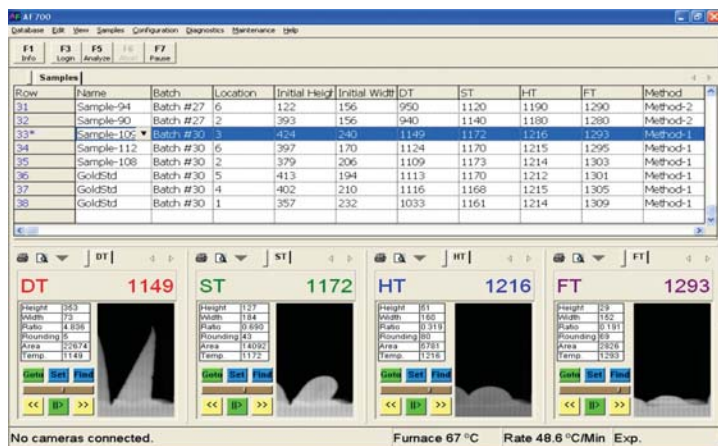


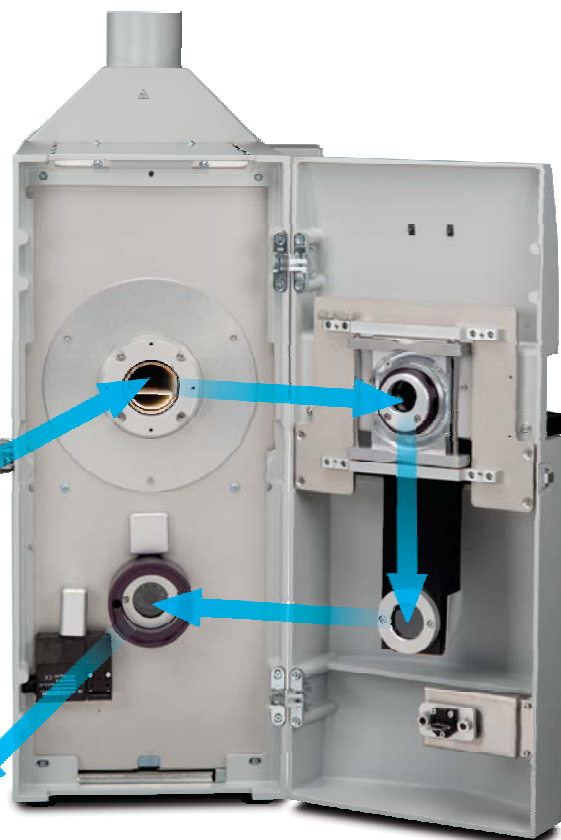
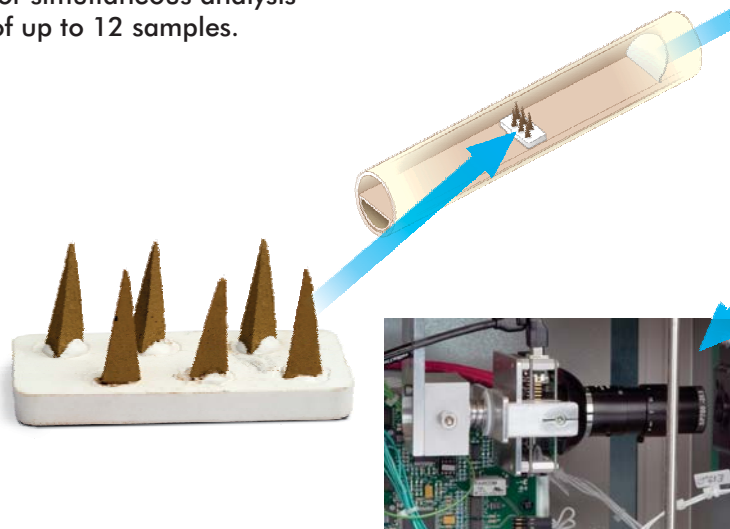
AF700

Ash Fusion

This state-of-the-art instrument offers you ASTM- and ISO-compliant techniques for automatically determining fusibility temperatures in coal and coke ash samples. Improved operational controls, automatic critical temperature measurement capability, digital archiving ability, integrated safety features, and increased instrument robustness are all a part of the AF700's advanced design.



Prepared ash cones are mounted on the ceramic tray then placed in the static horizontal furnace, which features an integrated viewing system and integrated camera. User-friendly operating software allows for seamless data and image management. Optional dual-configuration allows for simultaneous analysis of up to 12 samples.



LECO
EMPOWERING RESULTS